

HIGH PURITY ALUMINA CERAMICS

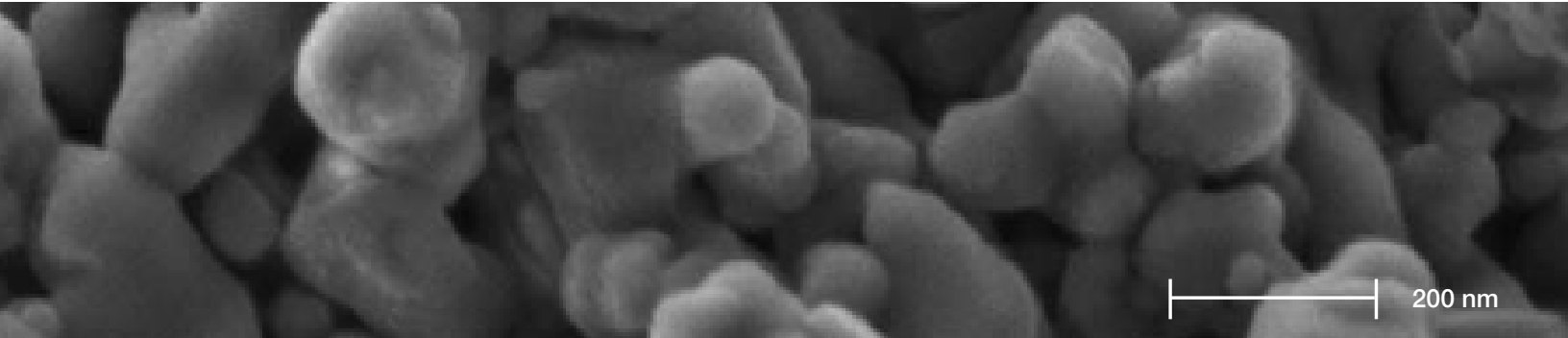


Figure 1: Scanning electron microscopy of ultra pure alumina powder. Source: ResearchGate

OVERVIEW

Alumina (Al_2O_3) is a common workhorse material in the world of technical ceramics and is utilized in an extensive variety of industries and applications. The versatility of alumina stems from its broadly impressive material properties, ease of manufacture, wide availability, and budget-friendly cost. STC's existing offerings include fully dense alumina materials in a wide variety of purity, from 74% to 99.8%, plus specialty porous aluminas such as bisque-fired and nano-porous (read the STC Porous Alumina white paper on our website).

Now, STC is announcing its highest purity dense alumina yet: 99.96%. We developed this ceramic material in response to growing industry need for mechanical, thermal, and electrical properties that go beyond 99.8%'s already high performance in ever more demanding applications.

ADVANTAGES

99.96% alumina offers several advantages over lower purity aluminas, which stem from both the extremely high purity level as well as the uniquely fine grain size ($\approx 1 \mu m$ average) found in the fired bulk material. Such advantages include:

- Extremely High Hardness
 - » Vickers 500g $\approx 2,000+$ kg/mm² (≈ 20 GPa) (30 – 50% higher than 99.8%)
- High Flexural Strength
 - » Weibull Average (4-pt): 55,000 psi (379 MPa) (Weibull Modulus=21+, n=31)
- High Dielectric Strength
 - » .125" thick: 400+ V/mil (compared to 310 V/mil for 99.8%)

Plus:

- Improved corrosion resistance due to lower impurity/glass content.
- Improved surface finishes are possible due to the fine average grain size.
- Improved thermal shock resistance.

See the full property chart for high purity alumina ceramics below.

APPLICATIONS

STC's 99.96% alumina offers improved performance over lower purity alumina ceramics in demanding operating conditions while remaining an economical alternative to silicon carbide in critical wear- and corrosion-resistance applications.

Our 99.96% alumina is currently utilized in a variety of demanding applications, including:

- High voltage dielectric components for nuclear energy production
- Mineral grinding wear components
- Dielectric components for semiconductor wafer handling
- High strength, thin-walled, high temperature components for heater wire support and mass spectrometer applications

STC can fashion 99.96% alumina into a wide variety of component shapes and sizes and to any precision and quality requirements necessary to suit your specific application needs.

PROPERTY COMPARISON CHART: HIGH PURITY ALUMINAS

	Property	ASTM Method	Units	AL9980 99.8%	AL9996 99.96%
General	Crystal Size (Average)	Thin Section	Microns	6	1
	Color	--	--	Ivory	Off White/Blush
	Gas Permeability	--	atms-cc/sec	gas tight <10 ⁻¹⁰	gas tight <10⁻¹⁰
	Water Absorption	C 20-97	%	0	0
Mechanical	Density	C 20-97	g/cc	3.91	3.93
	Hardness	Vickers 500 gm	GPa (kg/mm ²)	15 (1530)	19.6 (2000)
	Hardness	--	R45N	86	90
	Fracture Toughness	Notched Beam	MPa m ^{1/2}	4 - 5	5 - 6
	Flexural Strength (4-pt @RT)	C1161	MPa (kpsi)	--	379 (55)
	(3-pt @ RT)	F417-87	MPa (kpsi)	379 (55)	421 (61)
	Tensile Strength @ RT°	--	MPa (kpsi)	200 (29)	275 (40)
	Compressive Strength @ RT°	--	MPa (kpsi)	2240 (325)	2413 (350)
	Elastic Modulus	C848	GPa (kpsi)	379 (55)	393 (57)
	Poisson's Ratio	C848	--	0.23	0.23
Thermal	C.T.E. 25 - 100° C	C 372-96	x 10 ⁻⁶ /°C	6.5	6.5
	C.T.E. 25 - 300° C	C 372-96	x 10 ⁻⁶ /°C	7.9	7.9
	C.T.E. 25 - 600° C	C 372-96	x 10 ⁻⁶ /°C	8.1	8.2
	Thermal Conductivity @ RT	C 408	W/m K	30	35
	Max Use Temp (non-loading)	--	Fahrenheit (°F)	3047	3100
		--	Celcius (°C)	1675	1700
Electrical	Dielectric Strength (.125" Thick)	D 149-97A	V/mil	290	400+
	Dielectric Constant @ 1 MHz	D 150-98	--	9.8	9.9
	Dielectric Constant @ Gigahertz	D 2520-95	--	10	--
	Dielectric Loss @ 1 MHz	D 150-98	--	< .0001	< .0001
	Dielectric Loss @ Gigahertz	D 2520-95	--	< .0001	--
	Volume Resistivity, 25°C	D 257	ohms-cm	> 1.0 x 10 ¹⁴	> 1.0 x 10¹⁴
	Volume Resistivity, 300°C	D 1829	ohms-cm	3 x 10 ¹²	1 x 10¹³
	Volume Resistivity, 500°C	D 1829	ohms-cm	6 x 10 ¹⁰	5 x 10¹²
	Volume Resistivity, 700°C	D 1829	ohms-cm	6 x 10 ⁹	1 x 10¹²
	Volume Resistivity, 1000°C	D 1829	ohms-cm	--	--

Figure 2: Property comparison for high purity aluminas

Superior Technical Ceramics products and services are subject to the Company's standard terms and conditions, available on request or at ceramics.net. For more information contact an authorized Superior Technical Ceramics representative. Unless noted otherwise, trademarks and service marks herein are the property of Superior Technical Ceramics and may be registered in the United States and/or other countries. Superior Technical Ceramics products named herein may be protected by one or more U.S. and/or foreign patents. For more information, contact sales@ceramics.net. Specifications are subject to change without notice. Superior Technical Ceramics sells its products and services in accordance with the terms and conditions set forth in the applicable contract between Superior Technical Ceramics and the client.