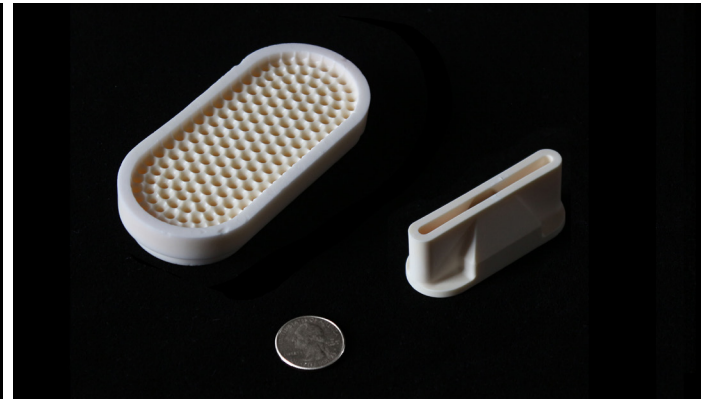
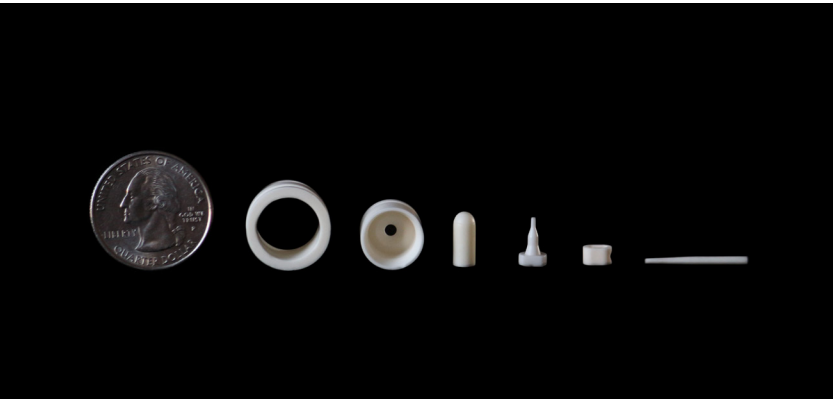




LOW PRESSURE INJECTION MOLDING

STC now offers low pressure injection molding to support complex part geometries. We can create the most intricate and delicate componentry across a broad range of technical ceramic materials.



Capabilities

- Low shrinkage material to hold tighter as-fired tolerances
- +/- 1/2% or +/- .002" whichever is greater depending on part size
- 0.010" min - 0.250" max component wall thickness
- Low and high volume requirements
- Odd shaped, taper, slots, keyways, threads
- Very small holes at tight tolerances

Applications

- Electrical Components
- Semiconductor Insulators
- Medical Instrumentation
- Aerospace Igniters
- Agricultural Wear Components

Materials

- 99.8% Alumina
- Yttria-Stabilized Zirconia (YTZP)
- Zirconia Toughened Alumina (ZTA)
- under development
- Magnesia-Stabilized Zirconia (MSZ)
- under development

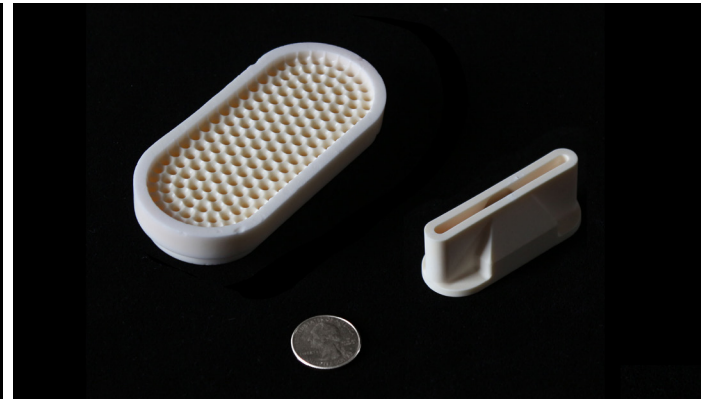
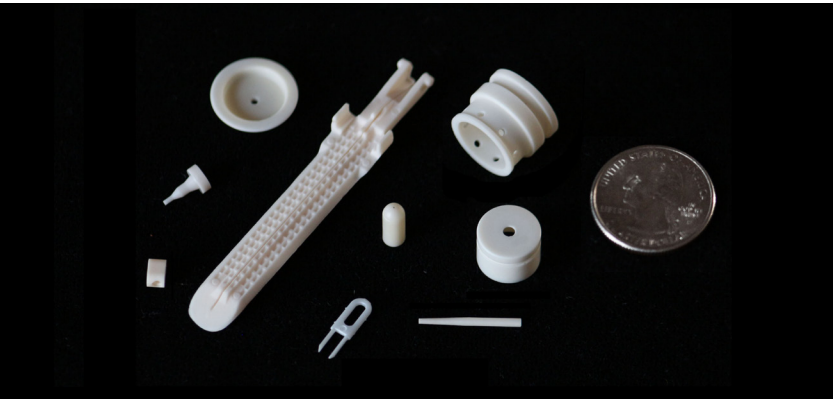
Service

- STC can provide same day quote turn around, along with application and customer service to support your existing and new project needs.



LOW PRESSURE INJECTION MOLDING

STC now offers low pressure injection molding to support complex part geometries. We can create the most intricate and delicate componentry across a broad range of technical ceramic materials.



Capabilities

- Low shrinkage material to hold tighter as-fired tolerances
- +/- 1/2% or +/- .002" whichever is greater depending on part size
- 0.010" min - 0.250" max component wall thickness
- Low and high volume requirements
- Odd shaped, taper, slots, keyways, threads
- Very small holes at tight tolerances

Applications

- Electrical Components
- Semiconductor Insulators
- Medical Instrumentation
- Aerospace Igniters
- Agricultural Wear Components

Materials

- 99.8% Alumina
- Yttria-Stabilized Zirconia (YTZP)
- Zirconia Toughened Alumina (ZTA)
 - under development
- Magnesia-Stabilized Zirconia (MSZ)
 - under development

Service

- STC can provide same day quote turn around, along with application and customer service to support your existing and new project needs.

Superior Technical Ceramics products and services are subject to the Company's standard terms and conditions, available on request or at ceramics.net. For more information contact an authorized Superior Technical Ceramics representative. Unless noted otherwise, trademarks and service marks herein are the property of Superior Technical Ceramics and may be registered in the United States and/or other countries. Superior Technical Ceramics products named herein may be protected by one or more U.S. and/or foreign patents. For more information, contact sales@ceramics.net. Specifications are subject to change without notice. Superior Technical Ceramics sells its products and services in accordance with the terms and conditions set forth in the applicable contract between Superior Technical Ceramics and the client.