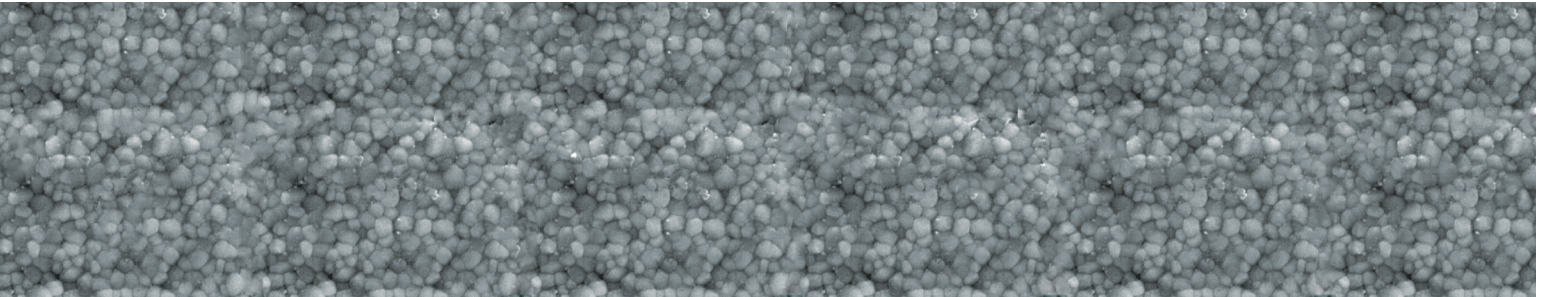


## YTTRIA STABILIZED TETRAGONAL ZIRCONIA POLYCRYSTALS (YTZP)

---

A purely tetragonal phase, fine grain material. This material offers the highest flexural strength of all Zirconia based materials. YTZP exhibits a trait called transformation toughening which allows it to resist crack propagation. Applied stress, magnified by the stress concentration at a crack tip, can cause the tetragonal phase to convert to monoclinic, with the associated volume expansion. This phase transformation can then put the crack into compression, retarding its growth, and enhancing the fracture toughness. This mechanism significantly extends the reliability and lifetime of products made with stabilized zirconia. YTZP is well suited to replacing metals due to its extremely high strength and toughness, it also offers far higher resistance to chemicals and superior erosion resistance.



### PRIME FEATURES

---

- Very high mechanical strength
- High impact resistance
- Very high wear resistance
- Very high erosion resistance
- Very low thermal conductivity
- High chemical resistance (acids/bases)
- High corrosion resistance

### TYPICAL APPLICATIONS

---

- Structural ceramics
- Wear parts
- Cutting tools (knives, blades, shears)
- Deep well, down hole components
- Thread and wire guides
- Thermal barrier coatings
- Fiber optic ferrules and sleeves
- Oxygen sensors
- Precision ball valve, balls and seats
- Rollers and guide for metal tube forming
- Hot metal extrusion dies
- Solid oxide fuel cell components

### APPLICATION LIMITATIONS

---

- YTZP Properties degrade rapidly when exposed to water vapor at 200 - 300° C.
- Strength & toughness degrade with increasing temperature, generally limiting structural use to below 500° C.

Superior Technical Ceramics products and services are subject to the Company's standard terms and conditions, available on request or at [ceramics.net](http://ceramics.net). For more information contact an authorized Superior Technical Ceramics representative. Unless noted otherwise, trademarks and service marks herein are the property of Superior Technical Ceramics and may be registered in the United States and/or other countries. Superior Technical Ceramics products named herein may be protected by one or more U.S. and/or foreign patents. For more information, contact [patents@ceramics.net](mailto:patents@ceramics.net). Specifications are subject to change without notice. Superior Technical Ceramics sells its products and services in accordance with the terms and conditions set forth in the applicable contract between Superior Technical Ceramics and the client.



YTZP SPECIFICATIONS

Composition				YTZP 2000	YTZP 4000	
Property	ASTM Method	Units				
General	Crystal Size (average)	Thin Section	Microns	1	1	
	Color	-	-	Ivory	Ivory	
	Gas Permeability	-	atms-cc/sec	gas tight <10 <sup>-10</sup>	gas tight <10 <sup>-10</sup>	
	Density	C 20-97	g/cc	6.02	6.07	
	Hardness	Vickers 500 gm	GPa (kg/mm <sup>2</sup> )	12.5 (1250)	12.5 (1250)	
	Hardness		R45N	80	80	
	Fracture Toughness	Notched Beam	MPam <sup>1/2</sup>	12.50	12.50	
	Flexural Strength (MOR) (3 point) @ RT <sup>o</sup>	F417-87	MPa (psi x 10 <sup>3</sup> )	951 (138)	1380 (200)	
	Tensile Strength @ RT <sup>o</sup>	-	MPa (psi x 10 <sup>3</sup> )	550 (80)	690 (100)	
	Compressive Strength @ RT <sup>o</sup>	-	MPa (psi x 10 <sup>3</sup> )	2000 (290)	2485 (360)	
	Elastic Modulus	C848	GPa (psi x 10 <sup>6</sup> )	30 (210)	30 (210)	
	Poisson's Ratio	C848	none	0.23	0.23	
	Thermal	C.T.E., 25 - 100°C	C372-96	x10 <sup>-6</sup> /C	6.9	6.9
		C.T.E., 25 - 300°C	-	-	8.1	8.1
C.T.E., 25 - 600°C		-	-	8.7	8.7	
Thermal Conductivity, 25° C		C 408	W/m-K	2.2	2.2	
Max Use Temp (Non-loading) (at High Strength)		-	Fahrenheit (°F)	932	932	
	Celcius (°C)		500	500		
Electrical	Dielectric Strength (.25 thick)	D 149-97A	V/mil	240	240	
	Dielectric Constant, 1 MHz	D 150-98	-	30	30	
	Dielectric Loss @ 1 MHz	D 150-98	-	0.001	0.001	
	Volume Resistivity, 25° C	D 257	ohms-cm	1x10 <sup>13</sup>	1x10 <sup>13</sup>	
	Volume Resistivity, 300° C	D1829	ohms-cm	1x10 <sup>10</sup>	1x10 <sup>10</sup>	
	Volume Resistivity, 500° C	D1829	ohms-cm	1x10 <sup>6</sup>	1x10 <sup>6</sup>	
	Volume Resistivity, 700° C	D1829	ohms-cm	5x10 <sup>3</sup>	5x10 <sup>3</sup>	
Volume Resistivity, 1000° C	D1829	ohms-cm	1x10 <sup>3</sup>	1x10 <sup>3</sup>		

Form Revised: 2/13/2014

CONTACT US